



OPEN HEAVEN TRAINING CENTRE

YWAM BANGLADESH

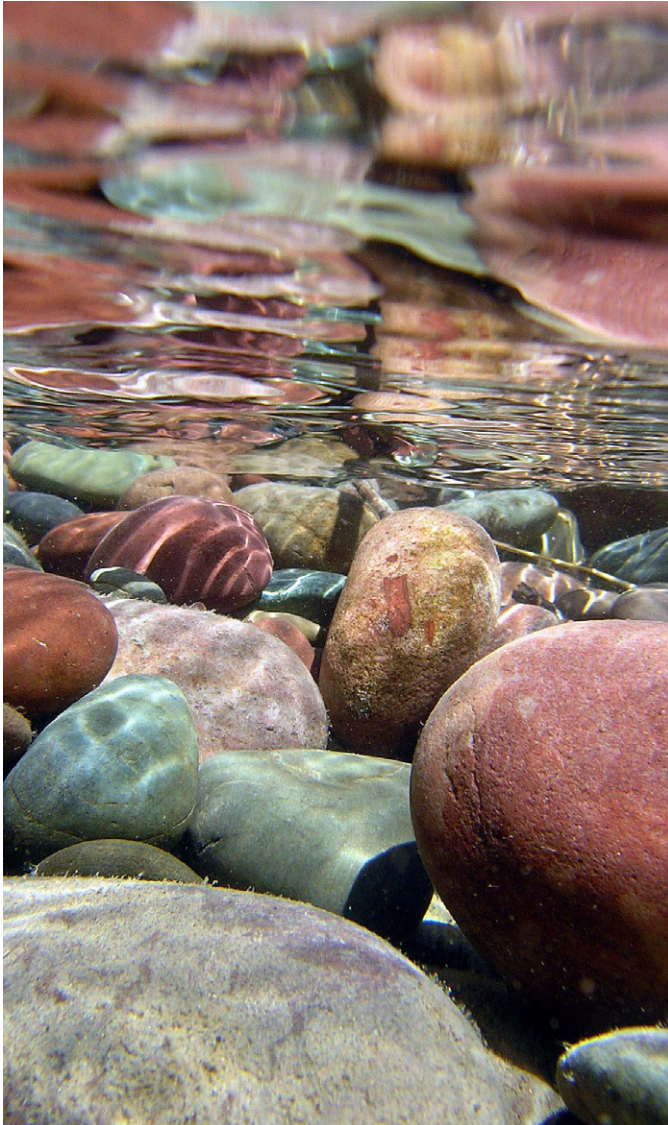
God's work through YWAM Bangladesh began over 32 years ago. He has given us a vision to "reach the unreached and disciple the reached" in order to raise up Bangladeshi leaders and disciples for the Kingdom of God.

We are desperately aware that unless our personal lives and our country are built on the Truth of God, we cannot thrive, neither will we glorify God. Our objective is for each student and staff member to develop an intimate relationship with God, to learn to hear God's voice and to reach the un-reached. This is in response to God's plan to reach unbelievers with the gospel of Jesus Christ and to disciple new believers, so that they can disciple others and demonstrate His love through their lives in all the spheres of society.

To meet these needs and accomplish this vision, we have pioneered ministries in health care training, primary schools, homes for children, leadership development, prayer and intercession, evangelism, discipleship trainings, biblical studies and worship. **God has been faithful to use these ministries to strengthen the body of Christ here in Bangladesh, but now he is asking something new of us.**

One YWAM leader said, "We foresee that the demand for YWAM trainings will keep increasing, especially among the Bangladeshi church, as revival spreads in this nation." Another said, "There is a clear and increasing sense that we need to prepare the church for a great awakening in Bangladesh." Our deepest desire is to be used by God to see His kingdom come in our country, but **how do we accomplish the task of preparing the church for revival?** As many small ministries scattered around the nation, we are not equipped to carry out this vision, but God is faithful.

We believe that God is leading us to build a training center where our ministries can be united and our resources can be used more efficiently to equip and prepare the church for a great awakening in Bangladesh. This center will be a safe place for the body of Christ to gather, to worship, and to preach/hear the word freely. It will allow our students and staff to be mutually encouraged in their faith as they see God at work in each other. It will provide space for our schools to grow, to train more disciples and meet the coming needs of the church. This training center will be a tool for the Kingdom of God to release thousands of workers all over Bangladesh to empower existing churches and plant new churches, to pioneer strategic ministries, and to be sent out as missionaries to unreached nations where others cannot go.



PREPARING FOR THE FUTURE.

DEUTERONOMY 28:12 - The Lord will open the heavens, the storehouse of his bounty, to send rain on your land in season and to bless all the work of your hands. You will lend to many nations but will borrow from none.

- **Heaven opens where His presence dwells** among His people, in times of need and times of persecution
- **Discipling and equipping** believers and emerging leaders
- To **reach** the unreached, to **disciple** the reached, and to help **grow** a strong, viable church
- **Preparing** for the future, for greater harvest in the land
- Not a place for settling, but **equipping and sending** to all parts of the nation and beyond . . .
- **Supporting** other training initiatives and ministries across the nation
- **Contributing** to a unified and cohesive church in Bangladesh
- **Training** to influence in all domains of society (church, family, business, government, science & industry, education, etc.)
- **Facilitating** continuing expansion of YWAM teams and ministries
- **Hospitable and welcoming** (xenophilic: lover of the new, the strange, the different)
- **Phase by phase construction plan** - according to growth and demand
- **Built to last** - capable of withstanding a 7.5 magnitude earthquake





LEADERSHIP DEVELOPMENT PROGRAMS



PRIMARY HEALTH CLINIC AND SCHOOL



BIBLE TRAINING AND DISCIPLESHIP



SERVING THE COMMUNITY



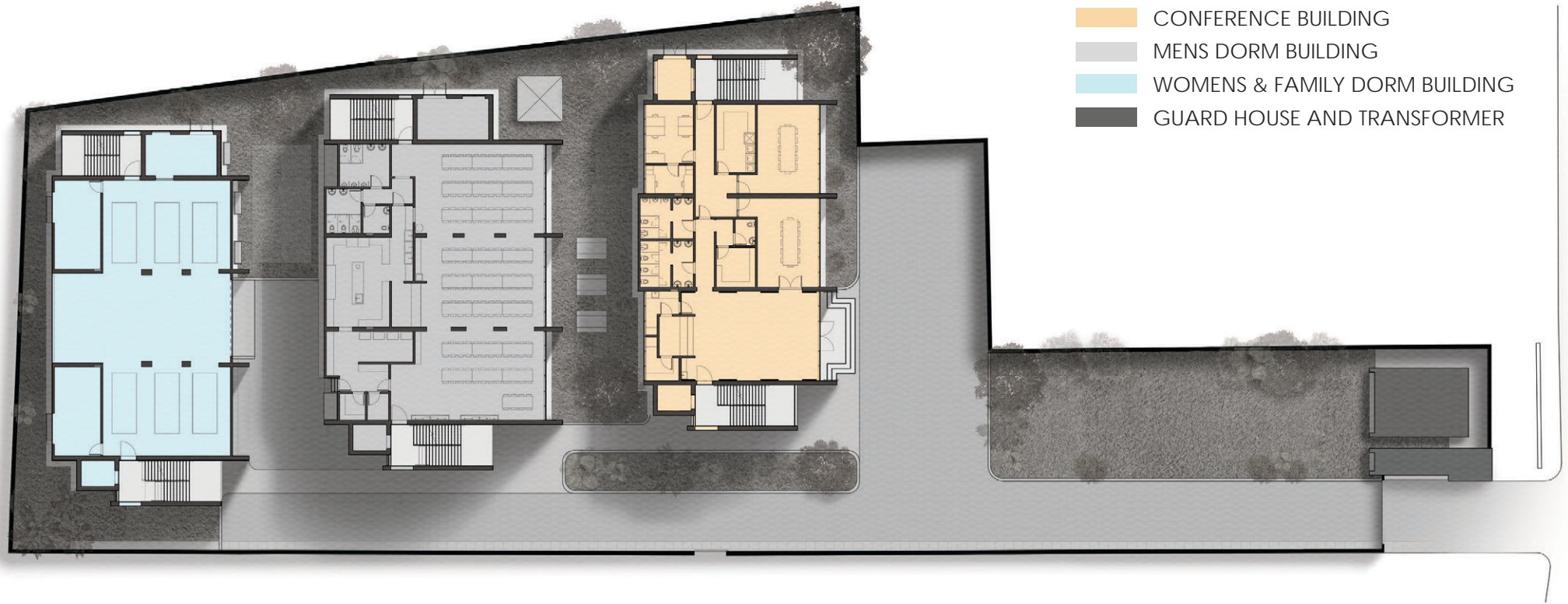
PRIMARY EDUCATION



WORSHIP, PRAYER, AND INTERCESSION

PROGRAMS





SITE PLAN



YOUTH WITH A MISSION
BANGLADESH



খোজা সর্গ

SITE INFORMATION

TOTAL SITE AREA
TOTAL SITE GREEN SPACE
TOTAL SITE PARKING

QUANTITY

41,630 SF
11,388 SF
24 SPOTS

PROJECT CAPACITY

TOTAL SLEEPING CAPACITY
TOTAL CONFERENCING CAPACITY
TOTAL DINING CAPACITY

OCCUPANTS

726 PERSONS
1,120 PERSONS
200 PERSONS

BUILDING SIZE

BUILDING HEIGHT
NUMBER OF FLOORS
BUILDING AREA PER FLOOR
TOTAL BUILDING AREA

WOMENS

136 FT
9 + ROOF
4,732 SF
47,320 SF

MENS

114 FT
7 + ROOF
5,570 SF
44,560 SF

CONFERENCE

90 FT
6
4,700 SF
28,200 SF



SITE SECTION - PHASE 1

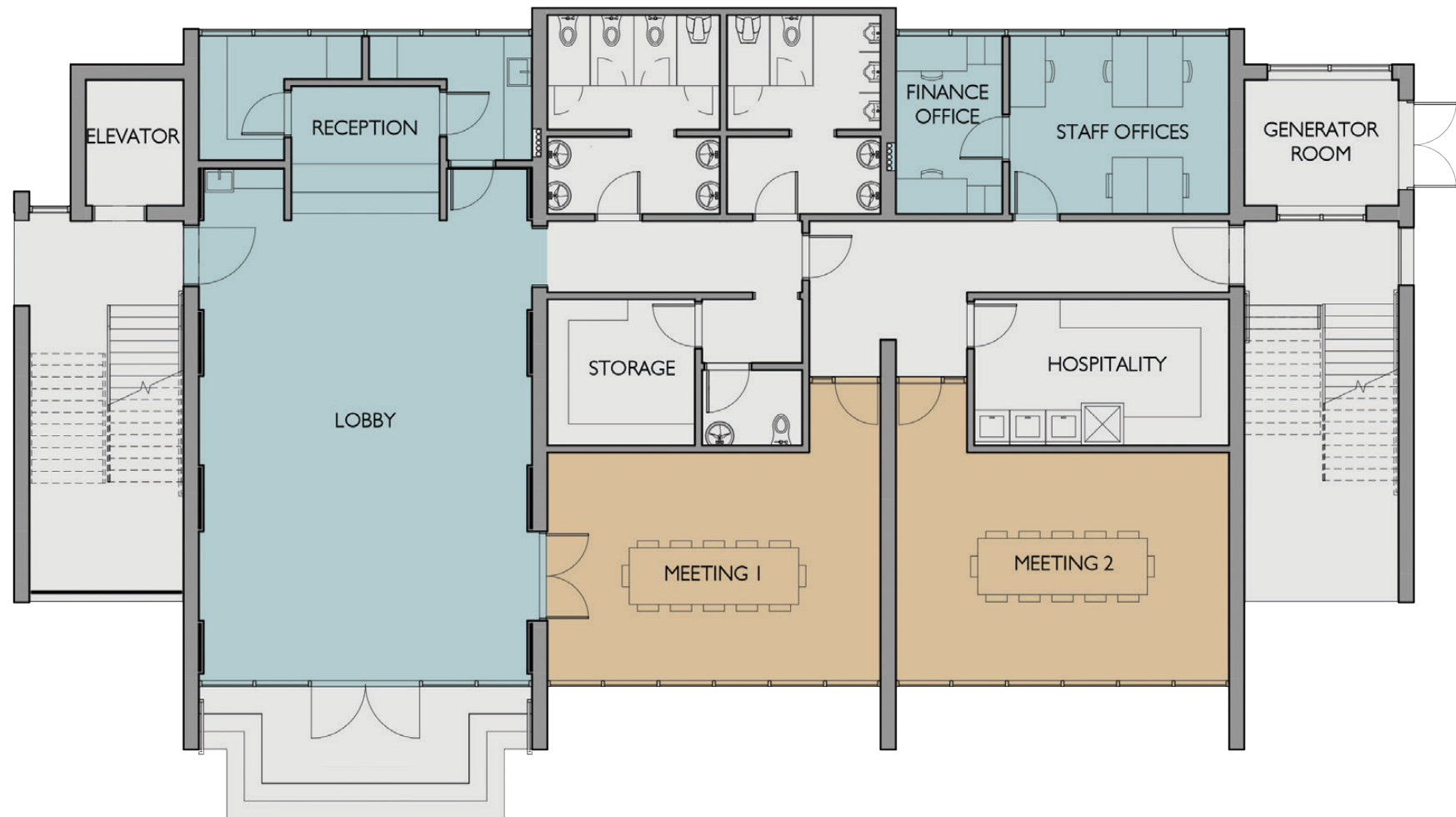


SITE SECTION - COMPLETE



YOUTH WITH A MISSION
BANGLADESH





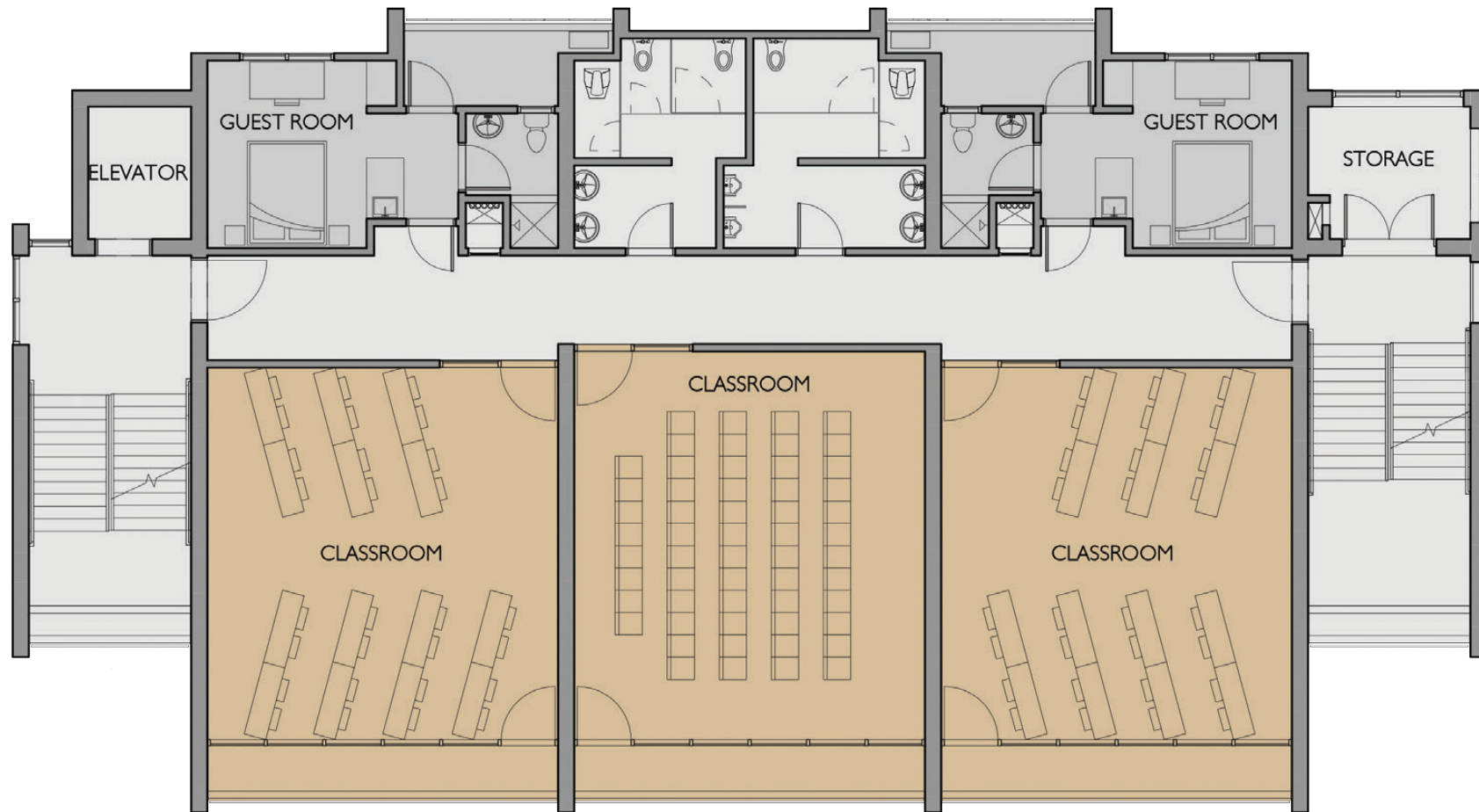
GROUND FLOOR

CONFERENCE BUILDING



YOUTH WITH A MISSION
BANGLADESH





TYPICAL CLASSROOM FLOOR

CONFERENCE BUILDING



YOUTH WITH A MISSION
BANGLADESH





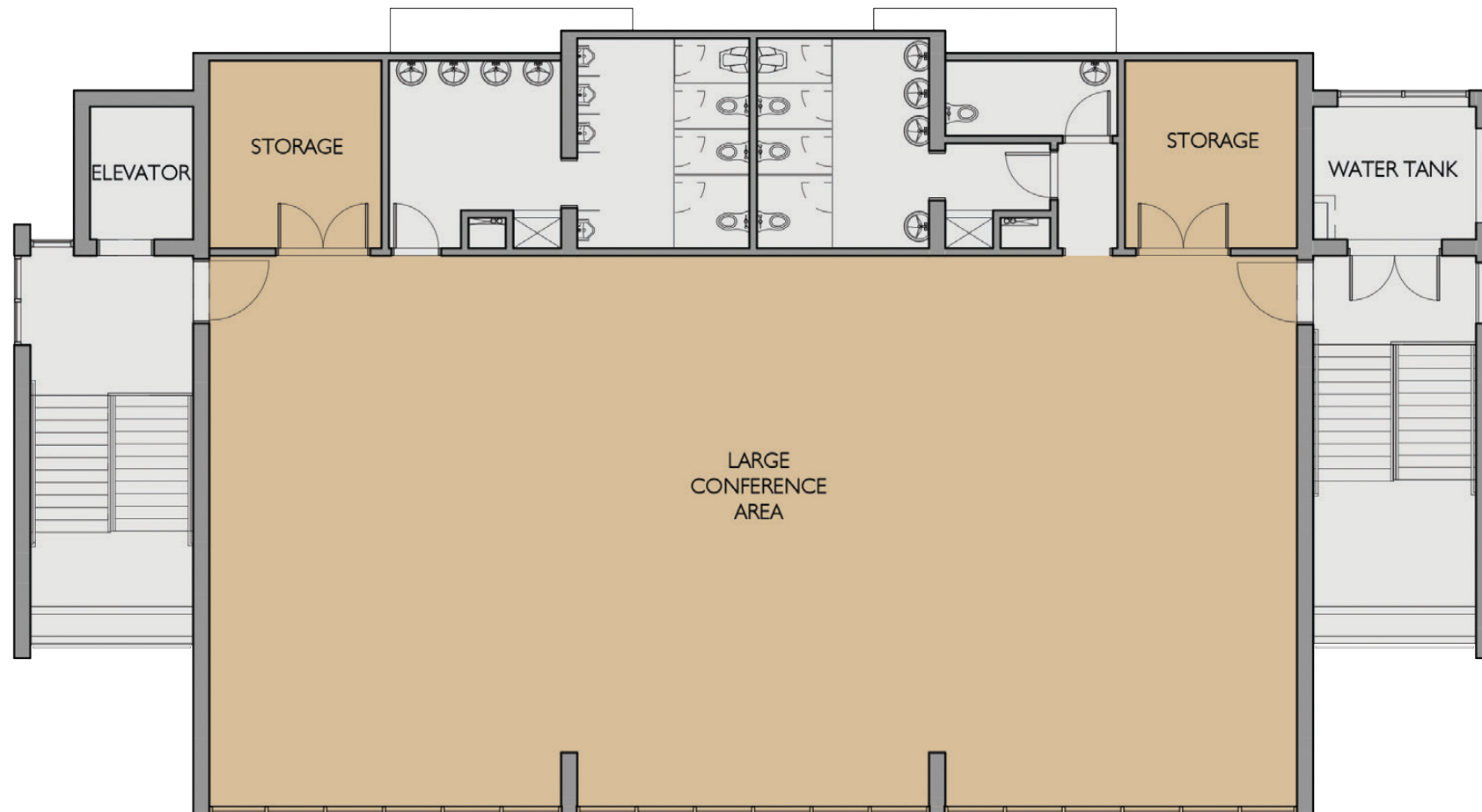
HOSPITALITY FLOOR

CONFERENCE BUILDING



YOUTH WITH A MISSION
BANGLADESH





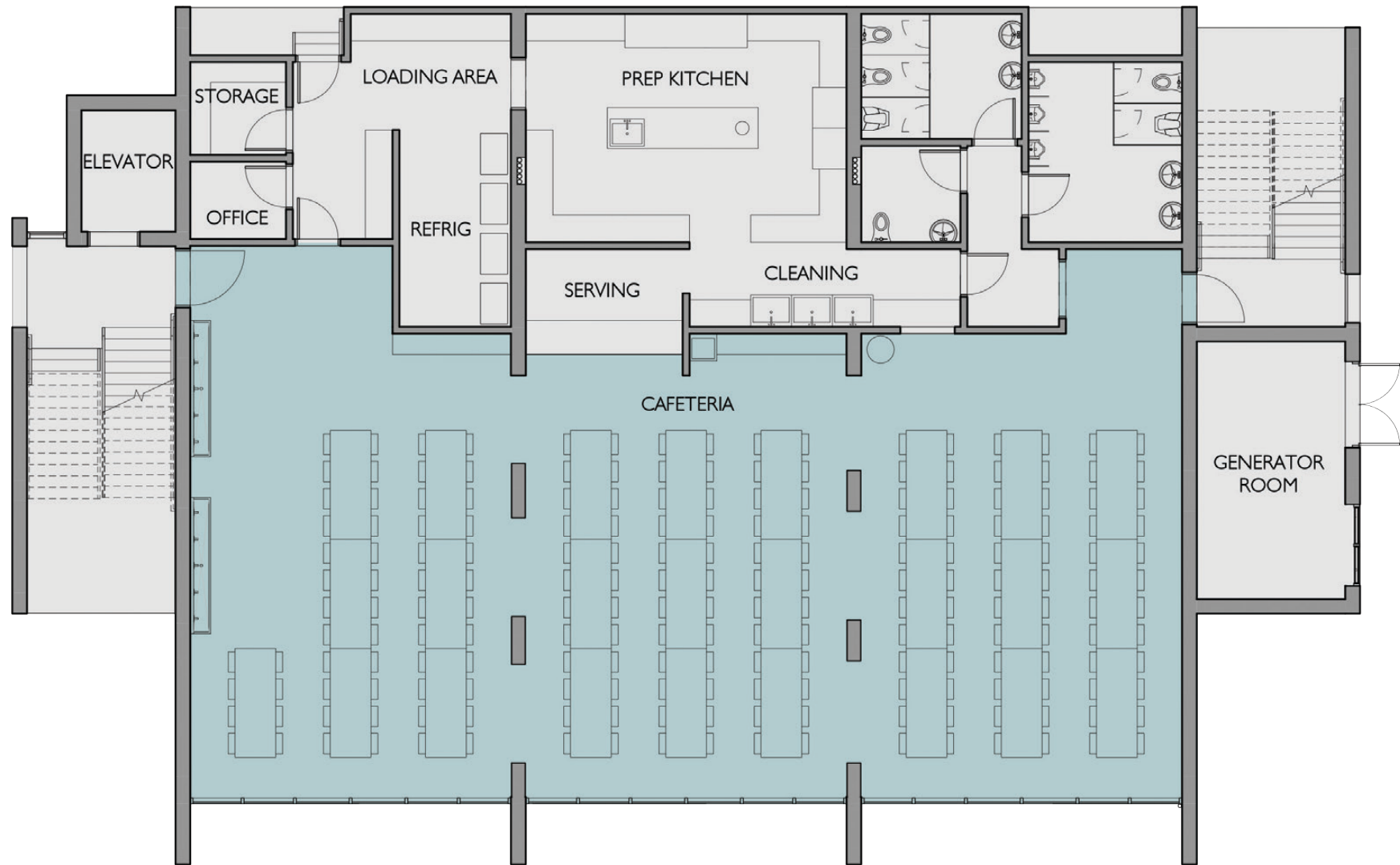
CONFERENCE ROOM FLOOR

CONFERENCE BUILDING



YOUTH WITH A MISSION
BANGLADESH





GROUND FLOOR

MEN'S BUILDING



YOUTH WITH A MISSION
BANGLADESH





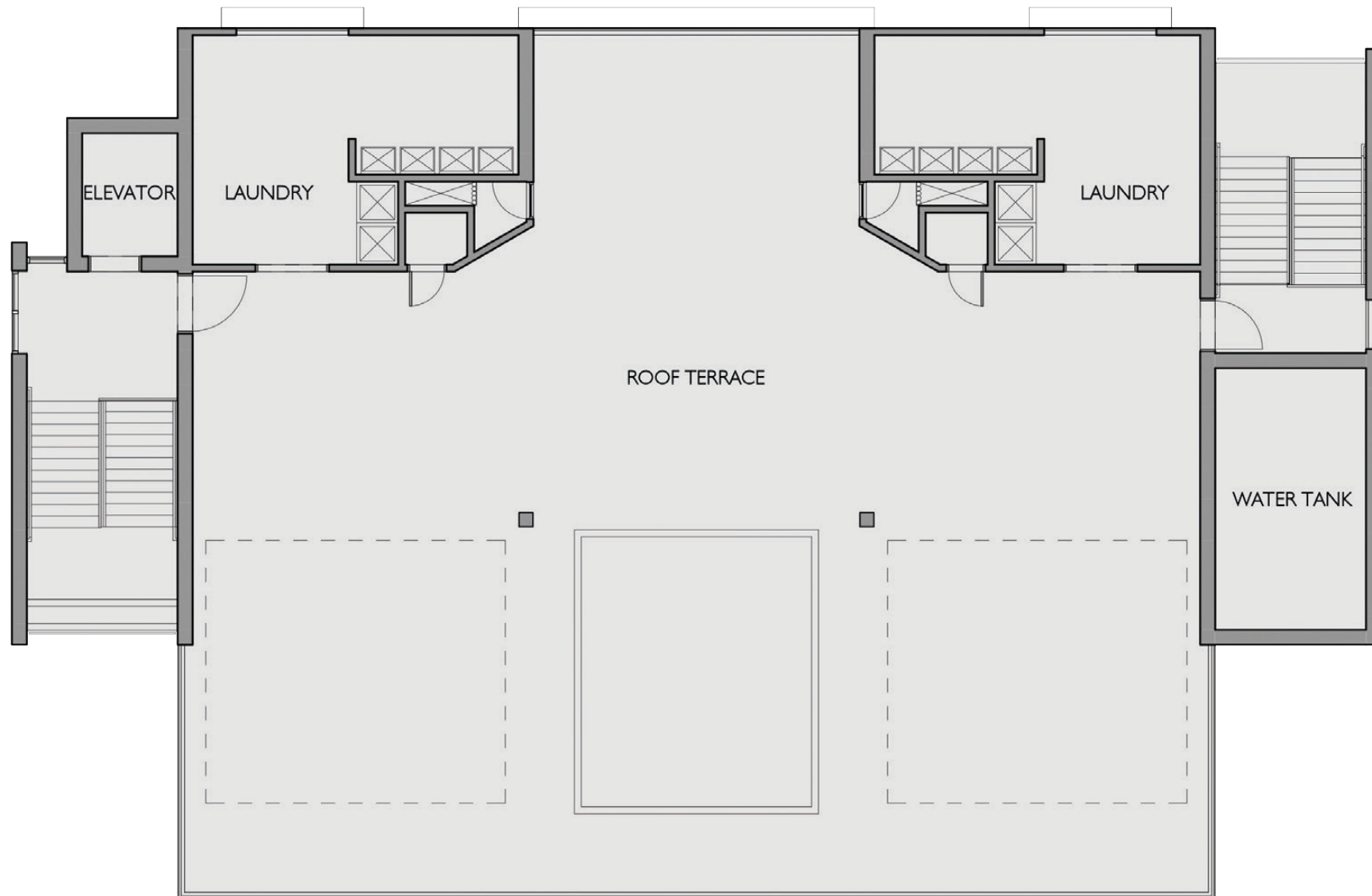
TYPICAL DORM ROOM FLOOR

MEN'S BUILDING



YOUTH WITH A MISSION
BANGLADESH





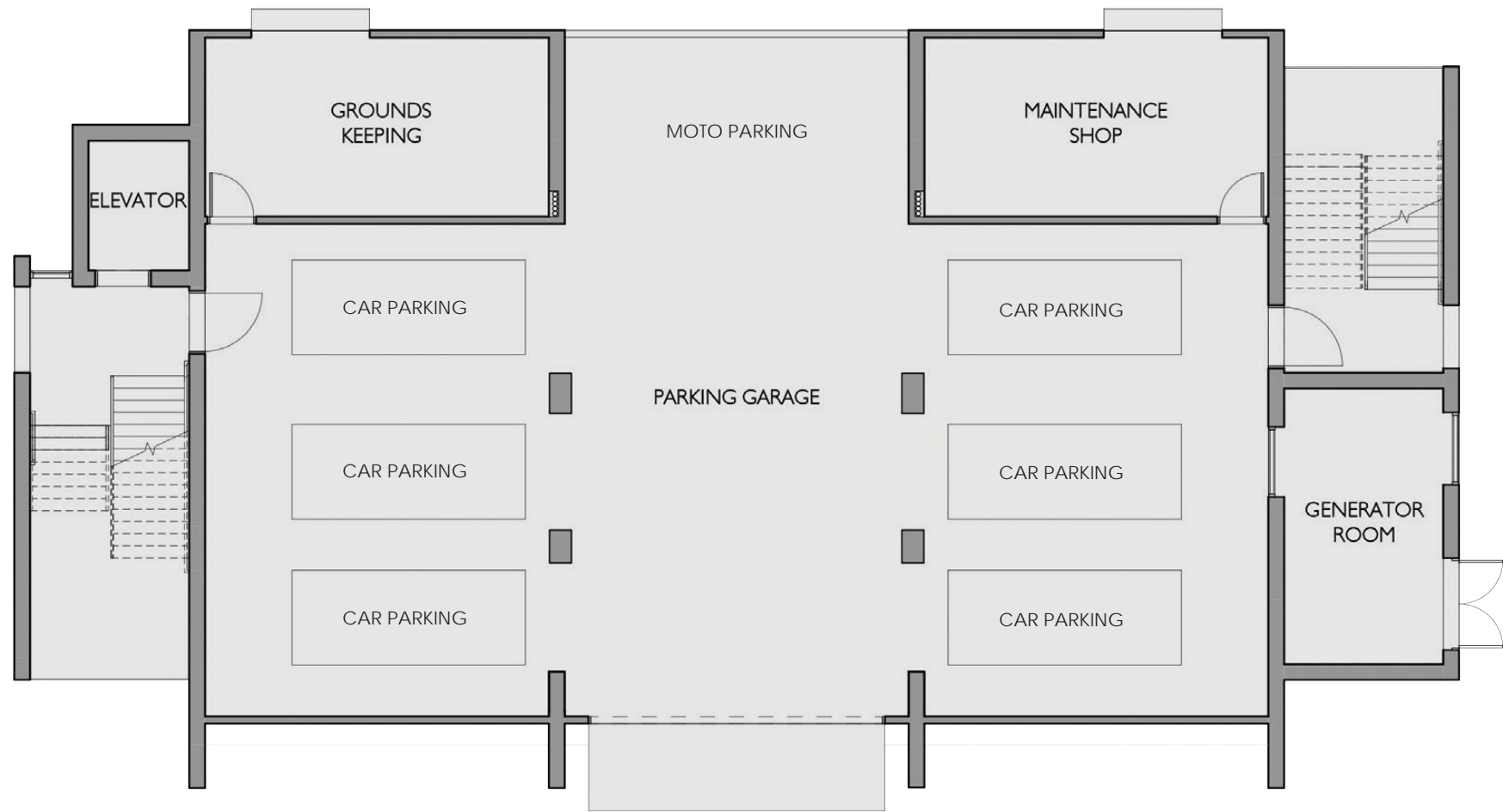
ROOFTOP TERRACE FLOOR

MEN'S BUILDING



YOUTH WITH A MISSION
BANGLADESH





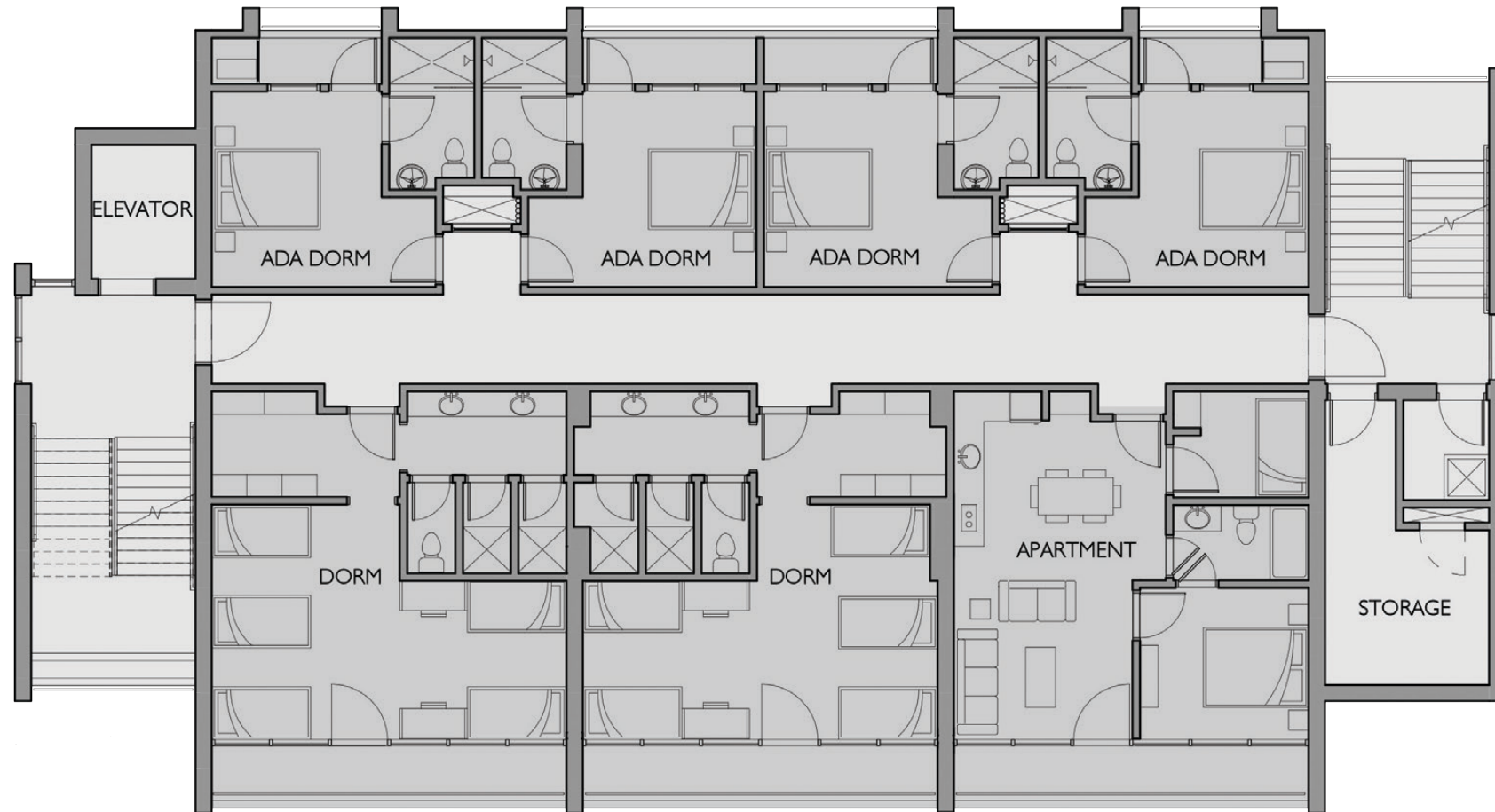
GROUND FLOOR

WOMEN'S & FAMILY BUILDING



YOUTH WITH A MISSION
BANGLADESH





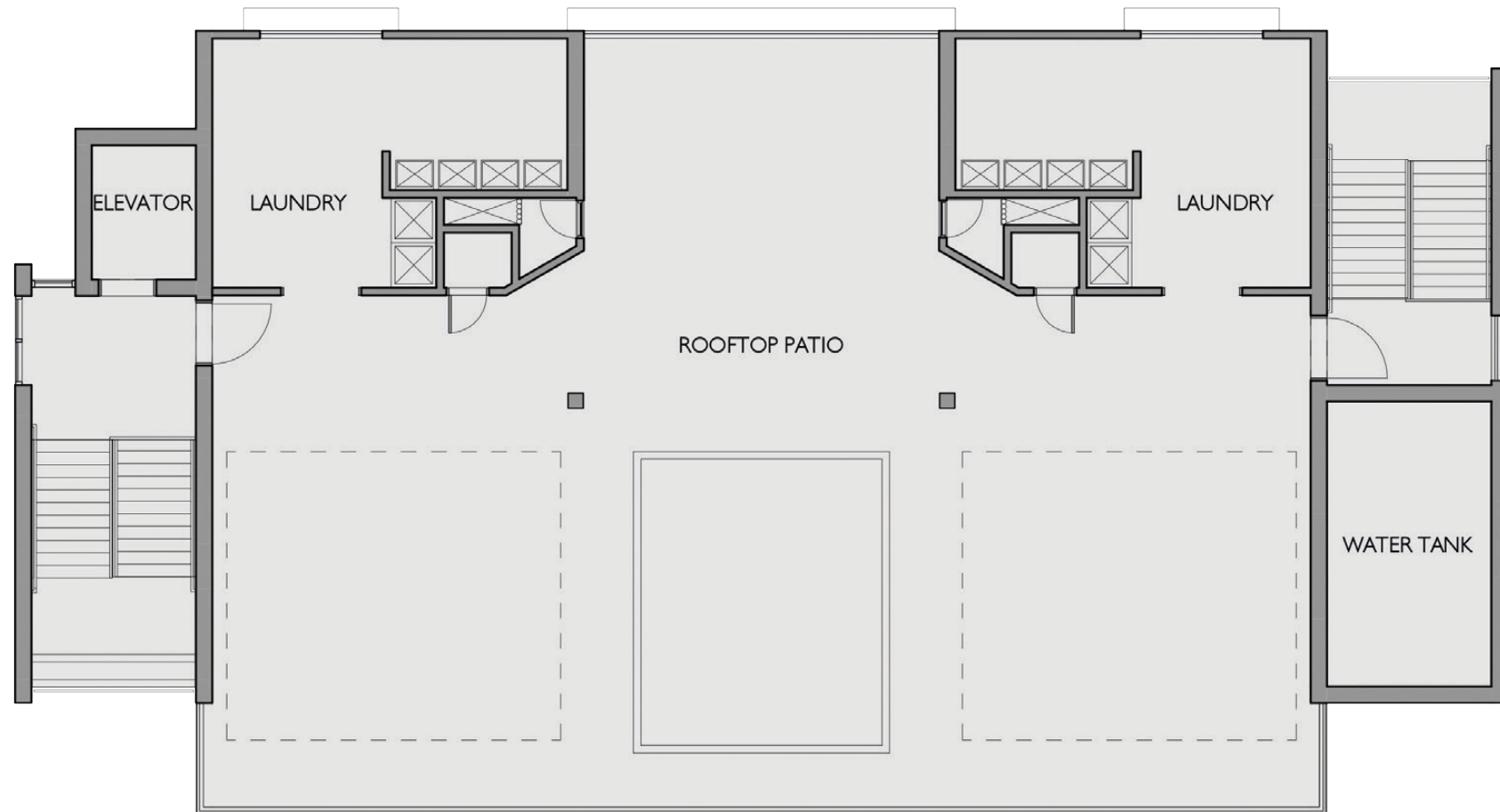
TYPICAL DORM ROOM FLOOR

WOMEN'S & FAMILY BUILDING



YOUTH WITH A MISSION
BANGLADESH





ROOFTOP TERRACE FLOOR

WOMEN'S & FAMILY BUILDING



YOUTH WITH A MISSION
BANGLADESH



OWNER:

YOUTH WITH A MISSION - BANGLADESH
CONSTRUCTION ELDERSHIP TEAM
ROBERT PUYU SILAS SARCAR
JOHN MCARTHUR LYDIA DOLA CONTIN

ARCHITECT OF RECORD

JIMMY BENEDICT BAROI
DHAKA, BANGLADESH
E: JIMMYBSQUARE@GMAIL.COM

DESIGN CONSULTANT

100 FOLD STUDIO - JASON CHERRY
420 BLACKTAIL RD.
LAKESIDE, MT 59922
E: JASON.CHERRY@100FOLDSTUDIO.ORG

ENGINEERING CONSULTANT

DANI ENGINEERS - NIRMAL ROY
DHAKA, BANGLADESH
E: NIRMALBBCS@GMAIL.COM

TO DONATE:

Please make checks payable to
Youth With A Mission - Oahu and send to:

YWAM Honolulu
Accounting Dept.
P.O. Box 61700
Honolulu, HI 96839 USA

Please include a note mentioning that
the check is for the YWAM Bangladesh
Training Center in Dhaka

For electronic transfers or credit card
donations please call:

+(808) 988 7015 or +(808) 369 7507

You will receive a tax deductible receipt
from YWAM Oahu for each donation



PARTNER WITH US

YOUTH WITH A MISSION
BANGLADESH





P.O. BOX 11038
DHAKA 1230
BANGLADESH

P: (880) 1711 560 252

E: 1chron21.24to26@gmail.com